

naughtone designs, manufactures and supplies useful, beautiful furniture.

This is what we do.....

about naughtone



When and why did we set up?

In 2005 naughtone was established as a platform to design, manufacture and supply quality British products to national and international markets. Founders, Mark Hammond and Kieron Bakewell had previous history working in this sector and market. They had their own ideas about how design led products should be presented and supplied.

The naughtone ethos has always focused on an honest approach to the design led market, where products and service can sometimes come a poor second to hype and marketing. The naughtone range is designed to perform its primary function perfectly and when this is executed with skilled British craftsmanship and quality materials, beauty and aspiration follows. naughtone has grown its collection over the last six years to respond to market needs and now has a range of genuinely useful, accessible beautiful products. We feel our very British approach to design and manufacture has led to our success.

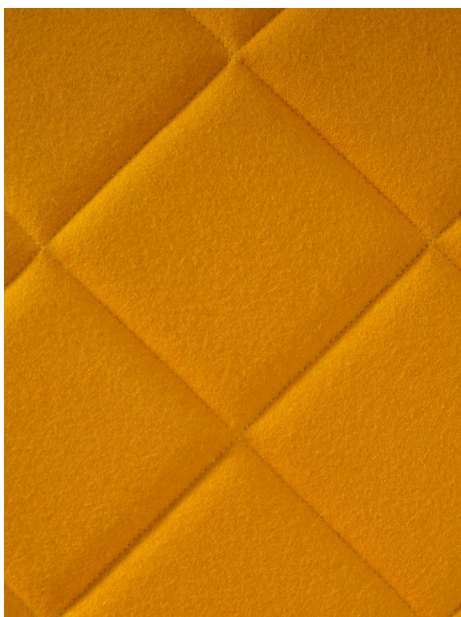


naughtone has grown its collection over the last six years to respond to market needs and now has a range of genuinely useful, accessible beautiful products. We feel our very British approach to design and manufacture has led to our success.

An example of our local production would be our upholstered products, which are manufactured using solid hardwood frames. The hardwood used in the production of these frames is most recently sourced from a sustainably managed forest in Harrogate. In this case, the timber, frame building and upholstery is all processed within a 20 mile radius. We also use fabrics from Britain.

“As an investor in people, naughtone prides itself on its personal development schemes”

british manufacturing



What techniques do we use?

We are based in Harrogate, close to the manufacturing heritage of the North and the spiritual home of the Textile industry to our West. naughtone is perfectly situated to provide contemporary British furniture design that utilises and advances traditional skills.

We aim to produce furniture with the lowest manufacturing miles in the Country. This is not just an economical drive but also an environmental one. Manufacturing locally in the UK allows us to produce in smaller batches, as we do not have to absorb huge transports costs by ordering in bulk. This also gives us the flexibility to respond speedily to our clients needs and market changes and keeps naughtone relevant and progressive.

An example of our local production would be our upholstered products, which are manufactured using solid hardwood frames. The hardwood used in these frames are sourced from a sustainably managed forest in Harrogate. In this case, the timber, frame building and upholstery is all processed within a 20 mile radius. We also use fabrics from Britain wherever possible; we have a strong relationship with Bute fabrics on the isle of Bute in Scotland. The 100% wool fabrics are not only sustainable, but very hard wearing, versatile and of course beautiful.

As naughtone progresses and the global economy and environment change, we feel the relevance for good-quality British manufacturing. We are currently a fantastic alternative to European Brands in the UK and Europe in terms of design and cost.

Why is made in Britain so important to us?

We believe that naughtone can be a positive contributor to defining a British style evolved from products being designed and produced in the UK. Our customers are very pleased with the quality of service and flexibility of design that we provide. There is a growing appreciation for Made in Britain products among domestic, commercial and retail consumers. naughtone is fortunate to work with many fantastic trade dealers in the UK who have long been aware of the benefits a British manufacturer offers compared to imported products. Often we are approached with projects that require a high attention to detail and quality of delivery.

friends & customers

Nokia, Staying Cool, City Lofts, Orange, LXB Properties, Cap Gemini, Big Brother, Land Securities, The Student Loans Company, Thomas Moore Square, Lowry, Hampshire County Council, MOMA, Dowds Farm School, O2, Linton springs, Bradford University, BBC, Dr Reece, The Royal Albert Hall, Glasgow City Halls, Hostel-line lake, Smiths of Smithfield, Microsoft.

