

Hush Chair

A sleek take on tradition.

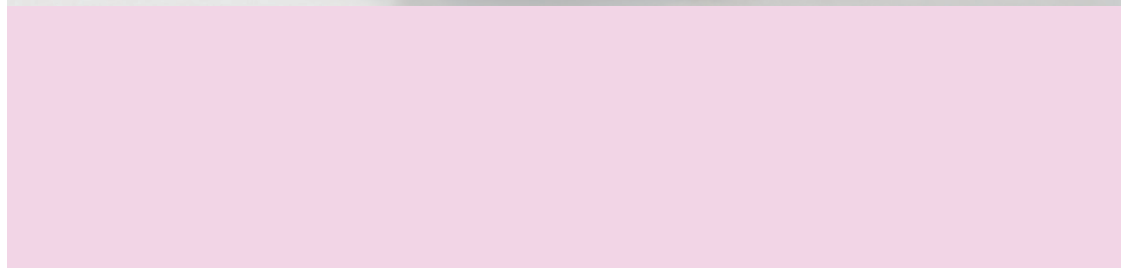
The Hush Chair gives the wingback chair a contemporary update, bringing its regal form into the 21st century. The chair's wraparound backrest creates a sense of cosy intimacy, making this a comfortable place to relax, have private conversations or do focused work.



Originally designed for a high-street bank, Hush Chair creates acoustic privacy for taking phone calls, having discreet discussions or for heads down, focused work.

Place it on its own, opposite one of its fellows, or repeat it across a floorplate: however it's used, Hush will set an elegant, professional tone

Available with multiple base and finish options, Hush Chair can be tailored to suit any environment; whether that's a design studio, a coworking space, a reception area or an executive workspace.



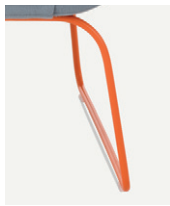
Product Specification



Base Options



Black/white/
chrome
sled base
Standard



RAL powder
coated sled base
NaughtOne
Colours



Solid oak
legs



Solid walnut
legs



Black/white/
polished
4 star base with
return to centre
mechanism



RAL powder
coated
4 star base with
return to centre
mechanism

Other Options



Two tone
outer/inner

Compliance

- FSC® certified products available upon request
- NaughtOne is FISP and ISO14001 certified
- Our seating is designed to meet or exceed all EN performance requirements per BS EN 16139:2013

Resources

3D visualisation models, 2D DWG and Revit files are available for all NaughtOne products. Download the files from our website www.naughtone.com

All images shown here and many others can be downloaded from www.naughtone.com or please request a link to our Dropbox account.

Two Hush chairs
with solid oak legs.



Sizes

All dimensions quoted are rounded to the nearest 5mm or nearest 1/2 inch



HUSHBSL

Hush Chair
Sled Base
w720 d815 h1160
seat 430 (mm)
w28.5 d32 h45.5
seat 17 (in)



HUSHB4S

Hush Chair
4 Star Base
w720 d815 h1160
seat 430 (mm)
w28.5 d32 h45.5
seat 17 (in)



HUSHBWD

Hush Chair
Wooden Legs
w720 d815 h1160
seat 430 (mm)
w28.5 d32 h45.5
seat 17 (in)

Colours

NaughtOneRAL palette



Technical Specification



Servicing

If a component is damaged, we will be happy to facilitate any replacements that are required. Please email our team with an image of the damaged part and reference your order number.

Warranty

NaughtOne offers a 10-year warranty across all products. Details on the terms and conditions of NaughtOne's warranty can be found at www.naughtone.com/warranty

Flammability

The cold cure foam material has been tested to meet the following standards:
British standard: 5852:2006 Part 2
California Technical Bulletin: 117-2013.
Italian standard: UNI 9175-CLASS 1.IM

The flammability standard of the covering fabric is dependent on the choice made by the customer. Details of the flammability rating of specific fabrics can be found on supplier websites.




Testing

Our chairs are designed to meet or exceed all EN performance requirements as per BS EN 16139:2013, which includes the following tests:

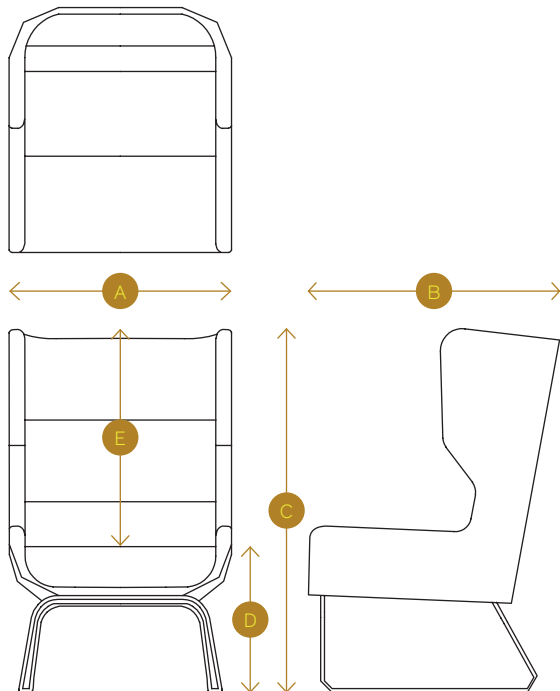
- Seat and back static load test
- Seat front edge static load test
- Vertical static load on back
- Foot rest and leg rest static load test
- Arm sideways static load test
- Arm downwards static load test
- Vertical upwards static load on arm rests
- Seat and back durability test
- Seat front edge durability test
- Leg forward static load test
- Leg sideways static load test
- Seat impact test
- Back impact test
- Arm impact test

Structural Testing Certifications

<u>HUSHBSL</u> Hush Chair Sled Base BS EN 16139:2013, Level 2 Static load 200kg	<u>HUSHBSL</u> Hush Chair Sled Base ANSI/BIFMA X5.4 (2012) Static load 300 lb
<u>HUSHBWD</u> Hush Chair Wooden Base BS EN 16139: 2013, Level 1 Static load 160kg	<u>HUSHBWD</u> Hush Chair Wooden Base ANSI/BIFMA X5.4 (2012) Static load 300 lb
<u>HUSHB4S</u> Hush Chair 4 Star Base BS EN 16139:2013, Level 2 Static load 200kg	

PRODUCT CODE/ DESCRIPTION	A WIDTH	B DEPTH	C HEIGHT	D SEAT HEIGHT	E HEIGHT FROM SEAT TO TOP	F WEIGHT	G CAD
HUSHBSL							
Hush Chair Sled Base	720 mm 28.5 in	815 mm 32 in	1160 mm 45.5 in	430 mm 17 in	700 mm 27.5 in	26.3 kg 58 lbs	
HUSHB4S							
Hush Chair 4 Star Base	720 mm 28.5 in	815 mm 32 in	1160 mm 45.5 in	430 mm 17 in	700 mm 27.5 in	27.5 kg 60.62 lbs	
HUSHBWD							
Hush Chair Wooden Legs	720 mm 28.5 in	815 mm 32 in	1160 mm 45.5 in	430 mm 17 in	700 mm 27.5 in	24.6 kg 54.2 lbs	

Measuring Guide





Hush chair with sled base.

Product Sustainability Statement

The Hush Sofa and Chair is available in a range of sizes and finishes, but for the purpose of this document we have a specific example from the range: Hush chair with sled base.

Environmental Attributes

- NaughtOne is FISP and ISO14001 certified
- NaughtOne is FSC® certified (FSC® C134222)
- 26.3kg total weight
- 31.3% Recyclable (base, foam, fixings and feet)
- 48.2% Reusable (plywood frame)
- 14.6% Recycled content (base and fixings)
- SCS Indoor Advantage™ Gold ANSI/BIFMA Furniture Emissions Standard (M7.1/X7.1-2011 R2021) and ANSI/BIFMA e-3-2019 (Credits 7.6.1, 7.6.2, 7.6.3)

These attributes can help you to achieve criteria towards LEED, BREEAM, Ska and WELL building certifications.



FSC® certified products available upon request (FSC® C134222)



NaughtOne offers PEFC certified products

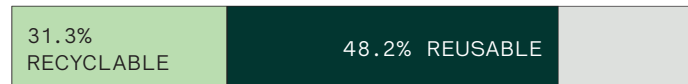


Where sustainable sources are quoted and a chain of custody is required by a customer, this must be indicated on the purchase order to NaughtOne. A chain of custody requested after an order has been placed or delivered may be difficult to recover.

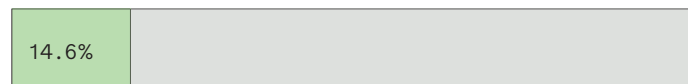
Figures stated in this document may vary based on model and options selected. We have based this document on a specific example when produced in the United Kingdom. Recycled content calculations are taken from supplier information and industry averages. Material variables are likely to affect the figures which may result in higher or lower percentages.

This document will be reviewed and updated periodically and is subject to change without notice.

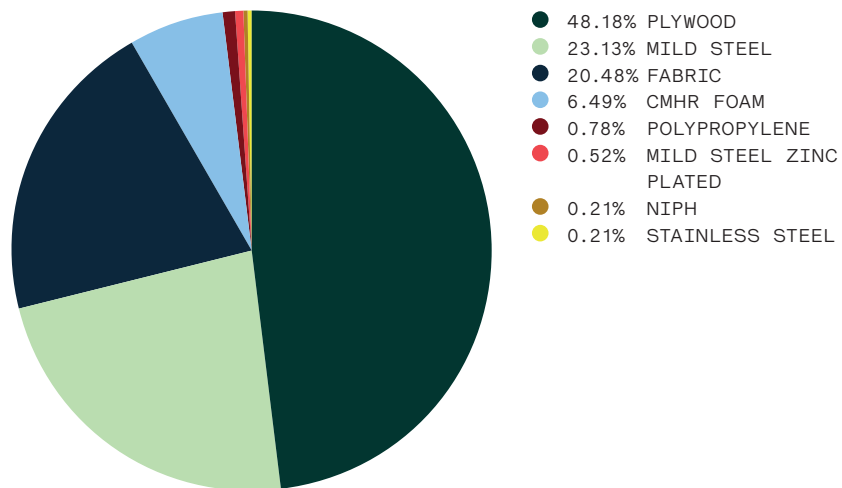
Recyclable Content



Recycled Content



Material Percentage Split



CSR Statement

We care a great deal about the sustainability of our products. At every stage of the process – from design to manufacturing to shipping – we seek to minimise our environmental impact. Our 10-year warranty speaks of our commitment to making quality, durable furniture that does not need to be regularly replaced. We offer FSC® certified upholstered products and use recycled metals in our table ranges. We have manufacturing facilities in North America to reduce freight miles in our largest market and we offer an innovative Take-Back Programme that enables clients to return products to us at their end of life so we can recycle the parts. We are proud of what we have done, but we are ready to go further.

Hush Chair

A sleek take on tradition.

Designed by NaughtOne

naughtone.com

