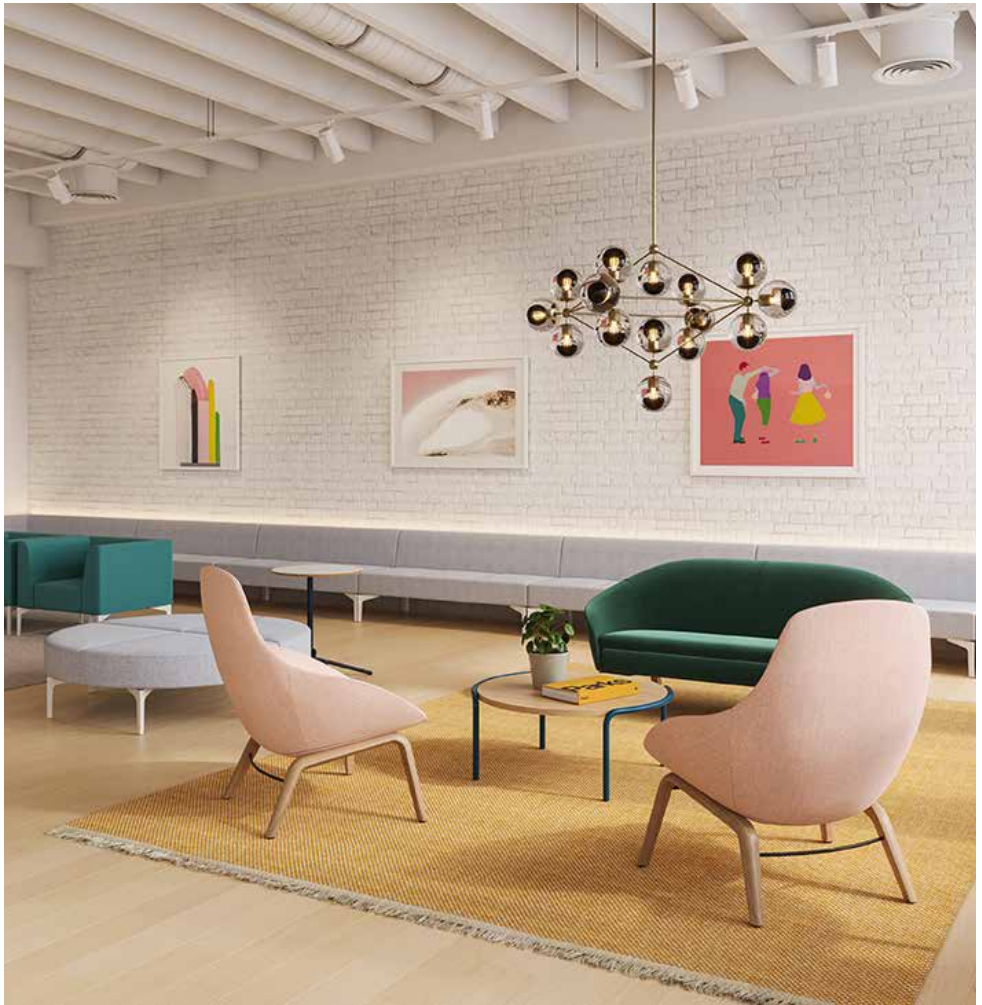


NaughtOne




Thinking of joining the team?

Absolute Simplicity, Infinite Possibility.

NaughtOne is a British furniture company founded in 2005, based in Yorkshire. We design and manufacture fundamentally versatile and beautifully simple furniture. Across the world, people use NaughtOne furniture from internationally renowned brands to local companies. Our products are available everywhere, and we partner with some of the most talented designers based all over the world.

NaughtOne has attracted a workforce that is passionate about the brand and the goals we work toward. We represent a broad variety of experiences and constantly learn from one another, and we're pleased that you're considering joining our team.



The name NaughtOne stands for the binary code of zero and one. It represents our mindset of keeping things simple, manifesting itself in everything we do.



Our philosophy comes from a distinct duality. An obsession with problem-solving, distilled to its simplest form. Combined with a charm that you can only find here.

Our Pillars

Space

Inspiring possibilities in all spaces. We believe furniture has the power to shape and transform spaces. Our products are designed to define a new era in modern spaces, providing solutions away from the desk that empower the workplace.

Product

A blank canvas for others' creativity. Our product's purpose and timeless design, couple with our limitless customisation and material possibilities allow architects and designers to truly express their creative vision without compromise.

Sustainability

Created for a more sustainable future. Responsible futures should be a vision of possibility not constraint. From the first sketch to the last stitch, we constantly strive to reduce our environmental impact and reimagine the lifecycle of our products.

Design

Timelessly relevant design. We design our products to endure time, trends and wear. Behind elegantly simple exteriors each product contains highly considered detail and design that stands the test of time.

Ethos

A British design philosophy that transcends location. Our philosophy is forged from a distinct duality. A tradition and obsession with purpose and problem solving distilled to its simplest, combined with a wit and charm that can only be found on these fair shores.

People

Shaped by a genuine human need. Everything we do and every product we create is in the service of people. Allowing them to work, create, collaborate and interact in more meaningful ways every day.

Products designed for people

Everything we do, and every product we create, is in the service of people. Our furniture enables them to work, create, collaborate and interact in more meaningful ways every day.

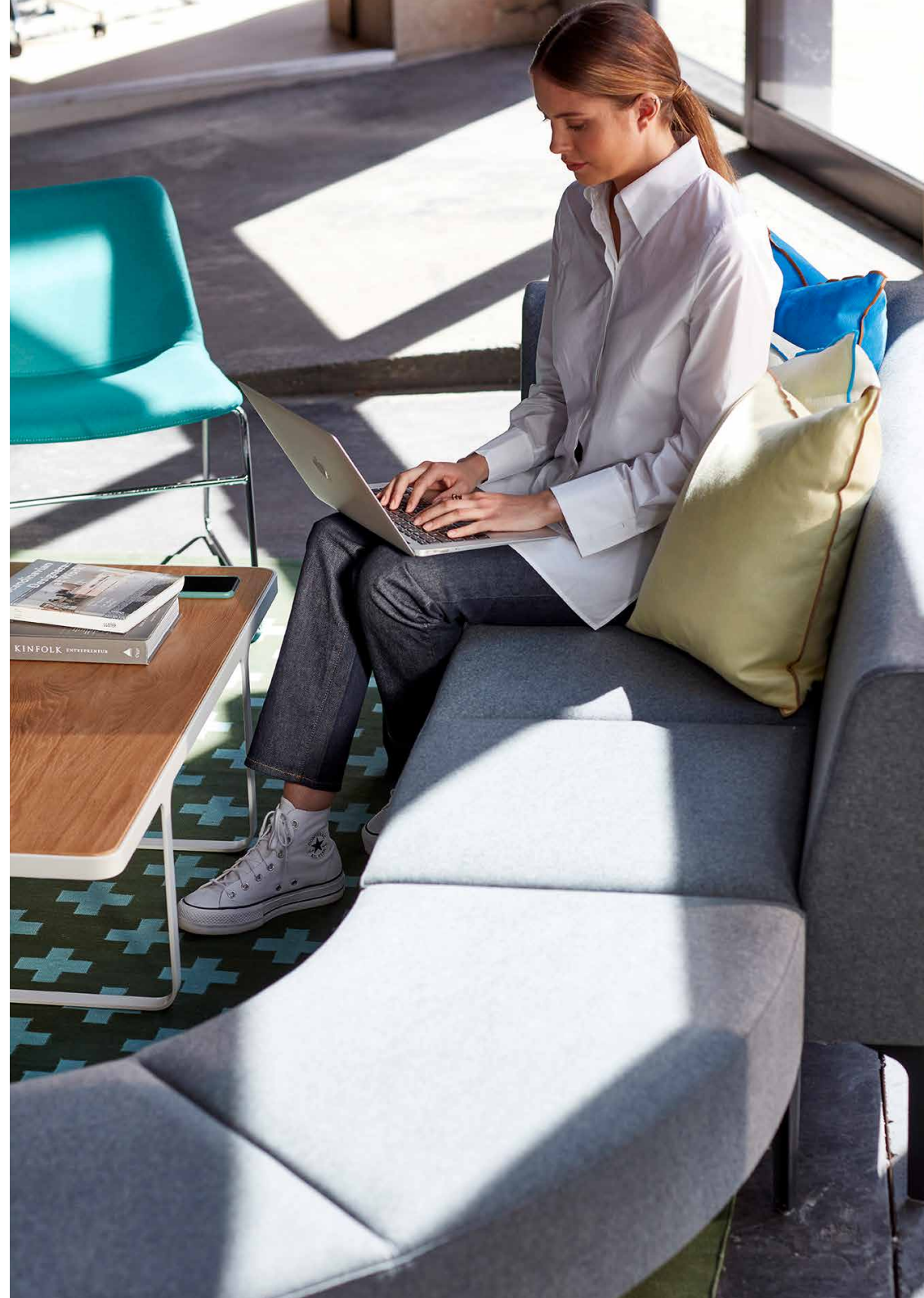
All that we do starts with the genuine human need to connect with each other. People are at the heart of every decision, from the factory floor to the customer. They are powering this business; they are the ones sharing their craft. They are who we design for: all those that work to shape spaces and give them their identity. We always design for people.

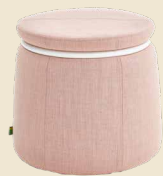
Our global team of 80 people are extraordinary. We attract, develop and retain world class talent.

Along with the UK, Sales and Operational staff are also based in Mainland Europe, India and North America. As NaughtOne has grown, so has the demand for diverse experience in the business. NaughtOne employees represent a diverse age demographic and almost even split between male and female.

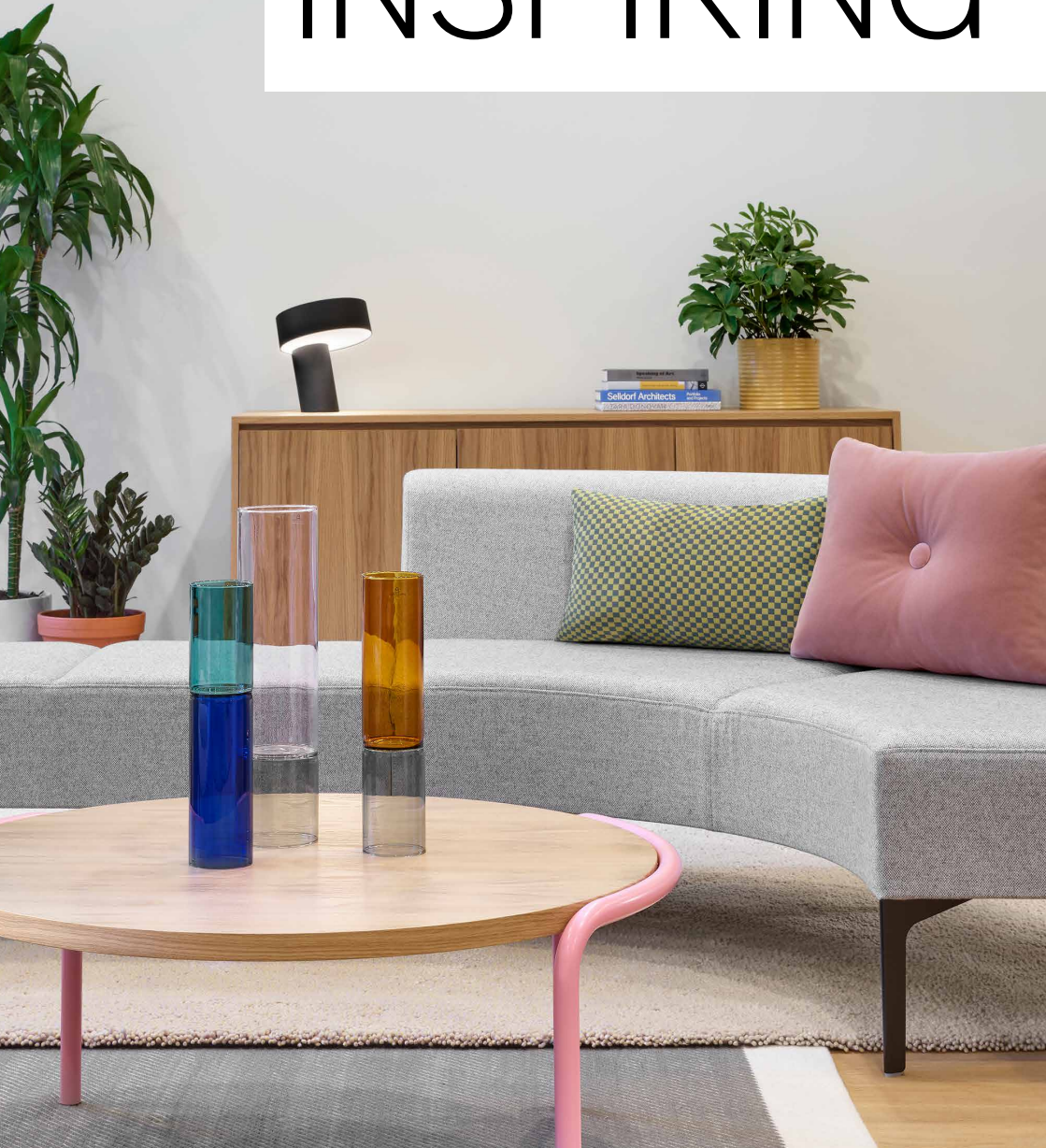
Our Headquarters are based in Knaresborough, North Yorkshire. This office is base to finance, production planning, marketing, sales, logistics, design and engineering staff. Knaresborough is also home to non-upholstered goods. Here we assemble tables and non-upholstered seating as well as consolidating components and orders. Elland, West Yorkshire is home to NaughtOne's upholstery factory and showroom. Here we produce goods that are shipped nationally and internationally. Elland is also home to NaughtOne's R&D workshop.

Our showrooms are in London and Chicago with a customer experience in Manchester. These spaces are strategically placed to offer consistent access to NaughtOne products in our key markets.





INSPIRING

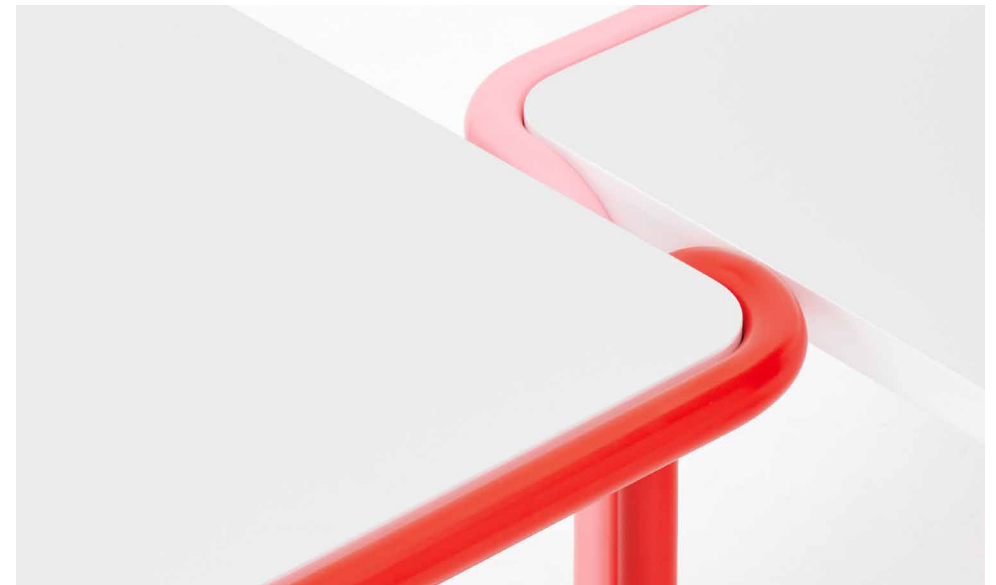


POSSIBILITY

Commercial environments are constantly changing. We create furniture for modern spaces, providing new solutions that bring a room to life.

NaughtOne's product range is a mix of seating and table products with the majority of revenue coming from seating and more specifically, upholstered seating. Revenue split across the range, although dominated by upholstered seating is split across a number of different products; this is important to manage a more consistent sales trend throughout changing market demands and product lifecycles.

NaughtOne products are targeted just above midpoint between entry level and premium pricing. At this price point, NaughtOne differentiates not only with aesthetic and functional appeal, but also with performance factors, important to contract interiors. Performance factors such as quality of materials & manufacturing techniques, 10 year warranty, short lead-times, global access and broad customisation options.



From the first sketch to the last stitch, we constantly strive to reduce our environmental impact and reimagine the lifecycle of our products.

Since our beginning, we have always wanted to impact the world positively. We led the way in environmental certifications and designing and manufacturing sustainable products that meet the most rigorous industry standards for commercial interiors.

We keep all production local in the UK, USA and Asia when possible, reducing carbon footprint and miles travelled. We optimise items for transport space, flat-packing or shipping disassembled with efficient minimal packaging. When we're thinking of new products, we begin at the end. We create everything in our range with its life cycle in mind.

Designing for the future opens a world of possibilities for us. We proudly offer a take-back programme, allowing people to return a product to us, so we can recycle, upcycle and re-use materials. In 2021 we launched the Ever Sofa and Chair, our first product designed with the principles of circularity.

We made it easy to service for remanufacturing or disassembling at the end of its life so we can properly recycle the materials. Our practices are constantly improving. We're on our way and willing to go further.



Perks of the job

Free parking
at Yorkshire sites

Free tea & coffee

Fresh fruit weekly

Casual dress code
& atmosphere

Kitchen facilities

Shower facilities

Company get-togethers
Annual

Charity events
Annual company charity

33 days holiday

2 charity days
Paid leave to take part in
charitable work / events

Life Insurance
Death in Service

Bike to work scheme

Retail & online discounts

Counselling support 24/7

Considered office aesthetic
Open plan environment

Staff discount

Bonus Opportunity
For all colleagues. Details about
this and your individual bonus %
opportunity will be communicated
to you.

Comprehensive Employee
Assistance Programme

Employee Share/
Stock Scheme

Group Personal
Pension Scheme

